

6<sup>TH</sup> W O R L D W A T E R F O R U M

# Support to assessment, monitoring and management internationally shared groundwaters



TIME FOR SOLUTIONS

Dr Neno Kukuric, Director  
**IGRAC -International  
Groundwater Resource  
Assessment Centre**  
15 March, 2012,

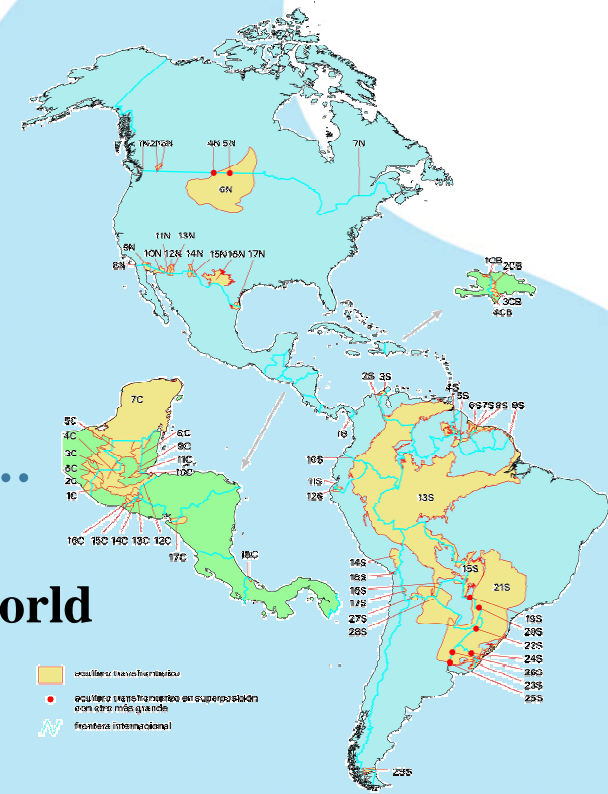
# Groundwater from Global Perspective

- | **IGRAC - International Groundwater Resource Assessment Centre is (since 2003) UNESCO and WMO groundwater centre**
- | **IGRAC facilitates and promotes global sharing of information and knowledge required for sustainable groundwater resources development and management**
- | **Focused on information and knowledge management, transboundary aquifer assessment and groundwater monitoring**
- | **Receives financial support from the Government of The Netherlands**
- | **In-house partner of UNESCO-IHE in Delft, The Netherlands**



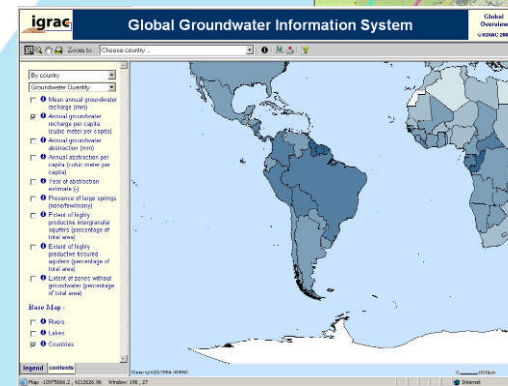
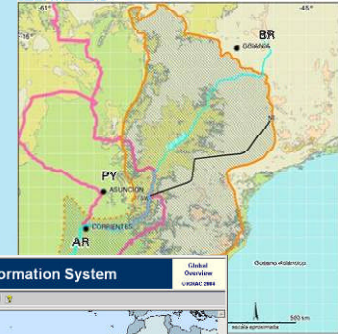
# TBA Assessment at IGRAC

- | **ISARM Regional Activities** - [www.isarm.org](http://www.isarm.org)
  - | cooperation with OAS, SADC, INWEB, UNECE, OSS, GWP-MED, GEF, UNEP, UNDP...
- | **UNECE Assessments in Europe and Asia**
- | **Participation in GEF (Global Environment Facility) projects**
- | **Development of a TBA Methodology and a TBA Course, contribution to WWAP, ...**
- | **A map Transboundary Aquifers of the World**



# TBA Assessment Methodology

- | **Hydrogeological Aspect**
  - | **Delineation and description**
  - | **Classification, diagnostic analysis and zoning**
  - | **Data harmonisation and information management**
- | **Environmental issues**
- | **Socio-economic framework**
- | **Institutional settings**
- | **International legal framework**



# Terrestrial Groundwater Monitoring

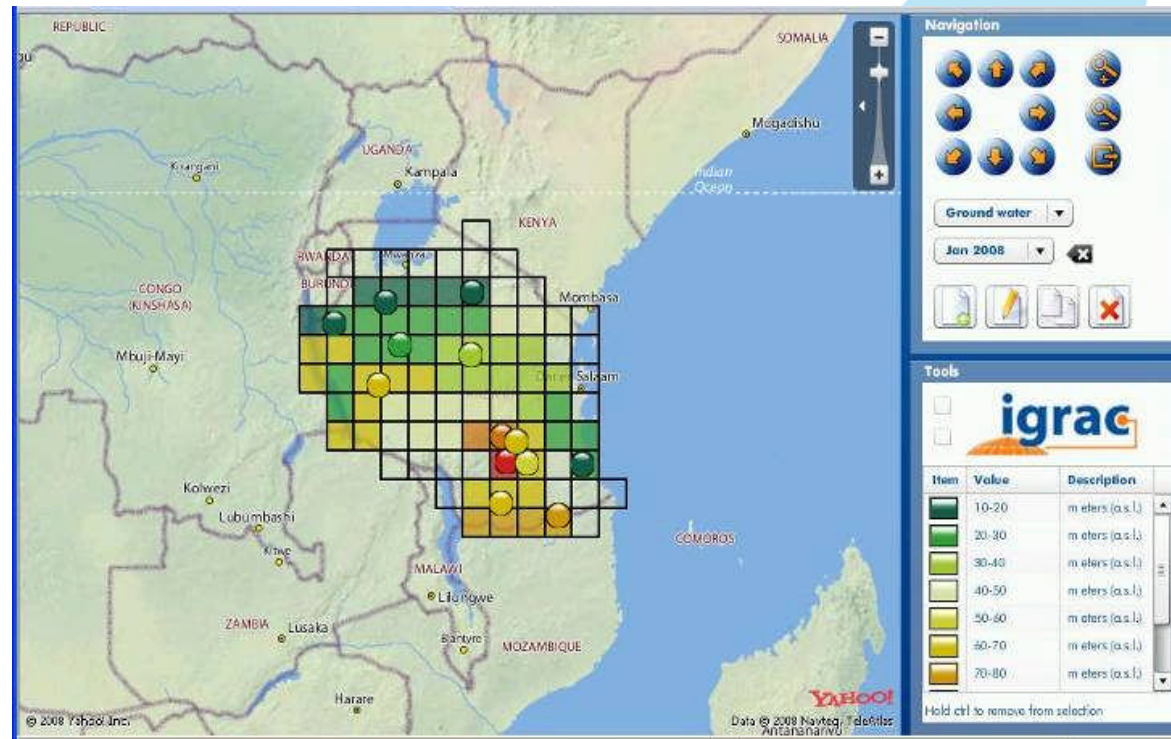
- | **A change of groundwater table is the best indication of the state of a groundwater system.**
- | **In-situ monitoring is necessary for obtaining groundwater level data whereas the hydrogeological knowledge is required for a regional estimation of the change.**
- | **There is clear need for the expansion of groundwater monitoring networks to improve understanding and management of groundwater systems in the changing world.**
- | **IGRAC is setting up a sustainable Global Groundwater Monitoring Network (GGMN) for a periodic assessment of the global change of groundwater resources**





# Global Groundwater Monitoring Network

- GGMN a participative, web-based network of networks, containing measurements and aggregated estimations





MARSEILLE - FRANCE

TIME FOR *SOLUTIONS*

MERCI / THANK YOU

[worldwaterforum6.org](http://worldwaterforum6.org)  
[solutionsforwater.org](http://solutionsforwater.org)

