

PAWA – Pilot Arno Water Accounts

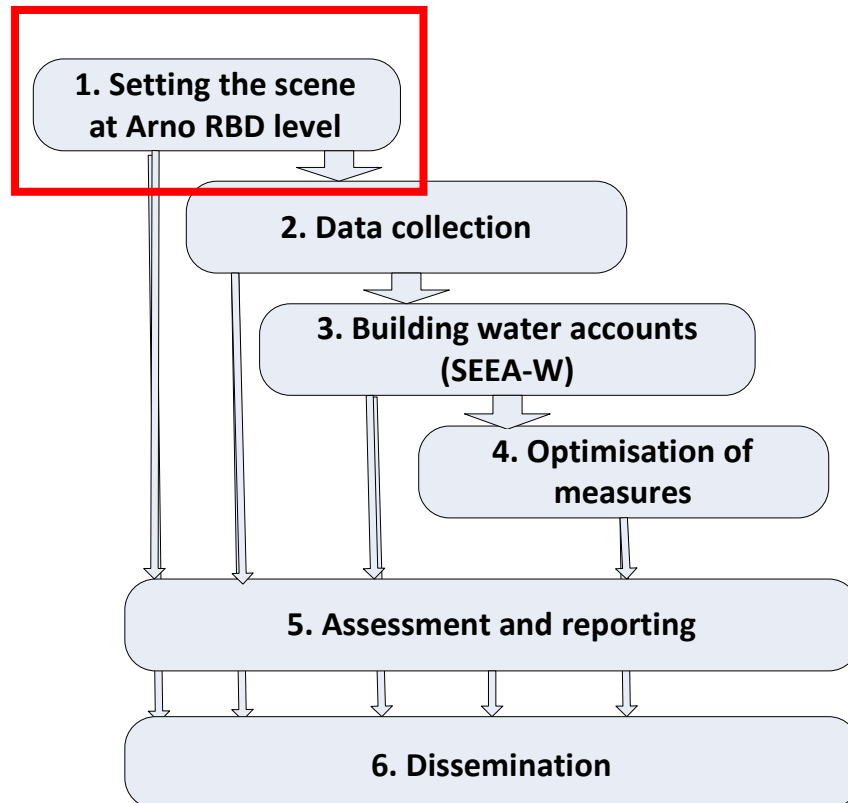
Training session on SEEA-W
System of Environmental-Economic Accounting for Water

Introduction

Eric MINO
EMWIS Technical Unit

Florence, 21 March 2014

SEEA-W training within PAWA activities



Act.	Deliverables	When
1	D1.1 Catalogue of data sources and tools	T0+3
	D1.2 Priorisation list of sub-basins	T0+3
2	D2.1 Repository of data sets	T0+6
	D2.2 Assessment of data availability	T0+6
3	D3.1 1 st draft water flow diagrams and associated SEEA-W tables	T0+8
	D3.2 Geo-referenced database for water accounts	T0+9
4	D4.1 Water efficient targets for future revisions Arno RBMP	T0+12
5	D5.1 Water account tables	T0+15
	D5.2 Final report	T0+15
6	D6.1 Project leaflet	T0+3
	D6.2 Compendium of lessons learnt	T0+15
	D6.3 Detailed list of dissemination activities, including project presentations during events	T0+15

Objectives of the training

- Providing basic concepts of SEEA-W in order to « speak the same language »
- Preparing the inventory and collection of necessary data sets for compiling simplified water accounts on some sub-basins of Arno river

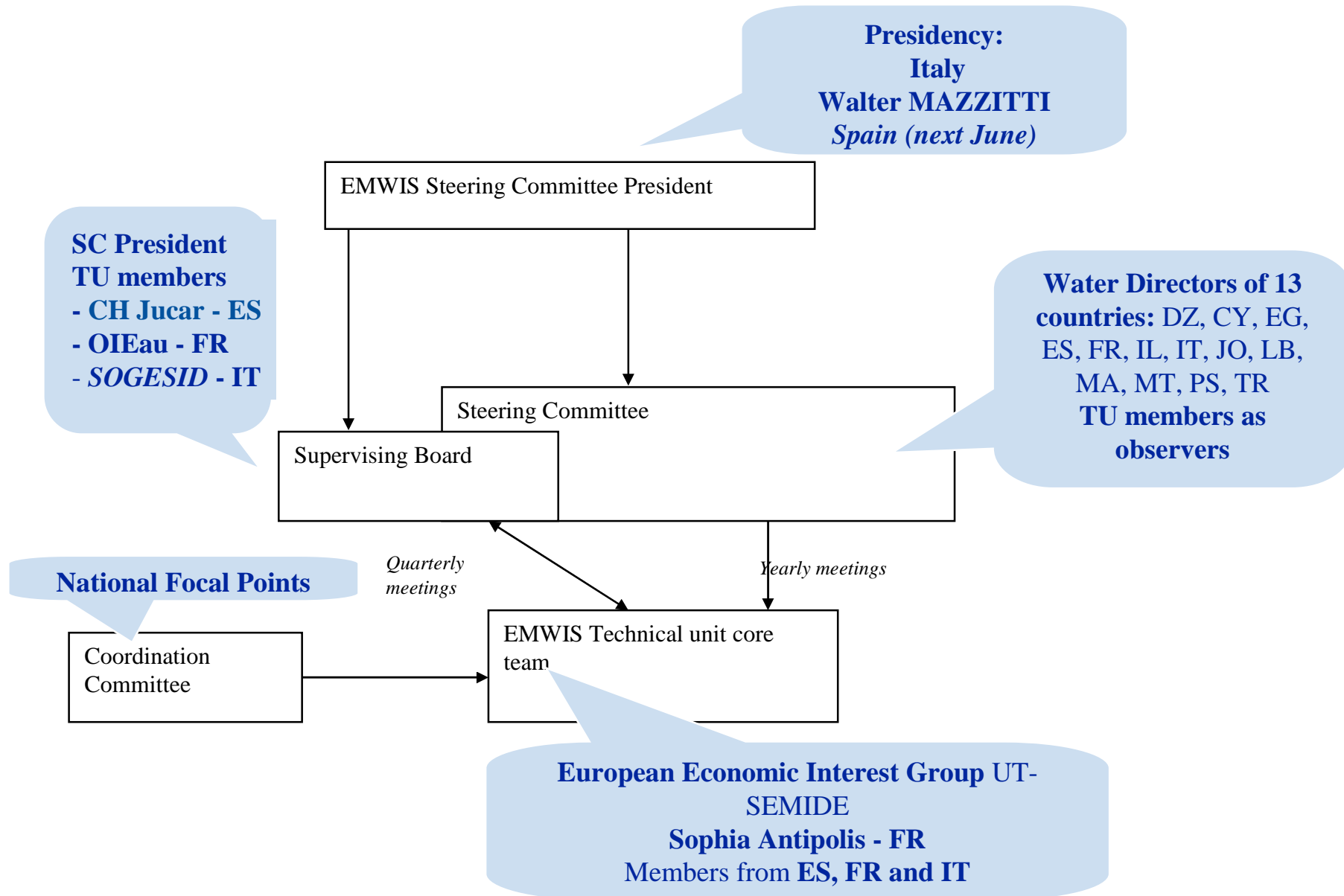
- EEIG EMWIS Technical Unit, Sophia Antipolis, France
- 14 Years' experience,
- Inland water sector,
- Institutional network of national water authorities of Euromed countries,
- 22 National focal points,
- Dissemination of information and results is a key part of EMWIS activities,
- Building National Water Information Systems (incl. SEEA-W),
- WGs. Mediterranean Joint Process between the EU Water Initiative and the EU WFD
- Pilot water accounts in Jucar in 2012/13



**Supporting water cooperation in the
Mediterranean area**



EMWIS structure



9:30 – 9:45	<i>Participants' registration</i>
9:45 -10:00	<i>Brief introduction and objective of the session</i> <i>Eric MINO</i>
10:00-10:40	<i>The SEEA-W framework, water policy and the EU approach</i> <i>Eric MINO</i> Questions
10:40 –11:20	<i>The language of stocks and flows – Statistical classification</i> <i>Florence PINTUS</i> Questions
11:20-11:30	Coffee Break
11:30-12:10	<i>Exercise on basic flows diagram</i> <i>Florence PINTUS</i>
12:10-12:40	<i>Data and information dissemination</i> <i>Eric MINO</i> Questions
12:40-13:15	<i>Data needs and collection process</i> <i>Eric MINO</i> Questions
13:15-13:30	<i>Meeting closure</i>
	Meeting languages English/Italian

Participants expectations

- Quick « tour de table »:
 - Your profile
 - What you know about water accounting
 - Your expectations from the project and from this training

Thank you for your kind attention!

e.mino@semide.org

<http://pawa.emwis.net/>